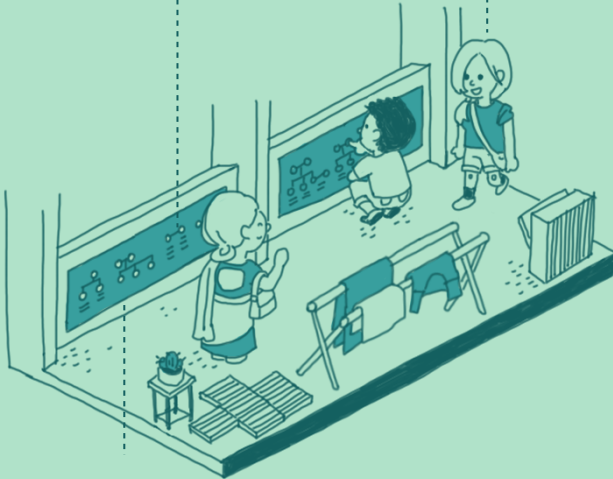


## MY NEIGHBOURHOOD TREE

Heard of a family tree? Well here's "My neighbourhood tree" where it is a combined community effort to map out each neighbour's family. Add on an interesting fact or quirk about each member of your family, as a way for everyone to get to know each other better.

### HOW-TO-DO

- 1 Draw your family members: include your name, unit number and an interesting fact
- 2 Pass it on to your next neighbour with the instruction manual



- 3 Pin up the finished piece on a common wall/ surface for all to view

NEIGHBOUR(S) NEEDED

5 OR MORE!

MATERIAL(S) NEEDED

(MAJONG) PAPER, PENS,  
COLOURING MATERIALS,  
INSTRUCTION MANUAL



# HI THERE! JOIN US TO PLAY THIS COMMUNITY GAME

## FIND OUT YOUR NEIGHBOURHOOD HISTORY

- 1** Start with your unit number, followed by the first name of your family members. Its even better if you can draw faces
- 2** Add something interesting about each of your family member. (eg. Laura is a busker who sings at Orchard Road on Saturday evenings!)
- 3** Think of it as a fun way to strike up a conversation with your neighbour (or recognise them) the next time you bump into them
- 4** Pass it on! The last neighbour should pin it up on a common wall for everyone to view